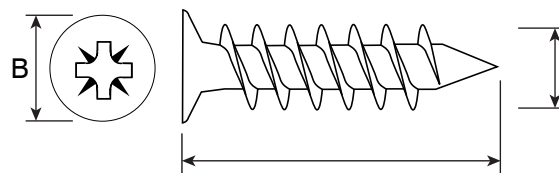
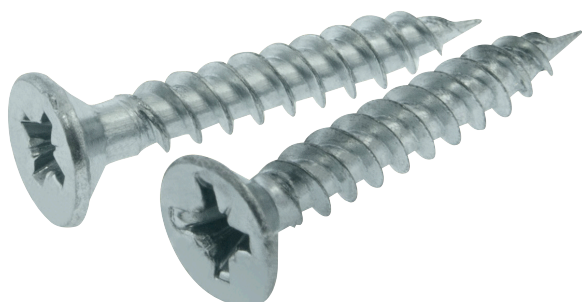


Product Code: QWS10-175

Description: 10 x 1.75" Twin Thread Countersunk Pozi Screws



Dimensions

| | |
|-----------------|-------------|
| Size (Imperial) | 10 x 1 3/4" |
| Size (Metric) | 4.6 x 45mm |
| Head Diameter | 10mm |

Materials

Bright Zinc Plated Steel

General Information

| | |
|-----------------|-----------------------|
| Head Type | Pozi Countersunk Head |
| Driver Bit Size | No. 2 |

Additional Information

Twin threads with parallel flank enabling faster insertion and greater pull out resistance.

Packaging Overview

Box Of 200 Screws

Directives

RoHS 2: 2011/65/EU & RoHS 3: 2015/863/EU

REACH: 1907/2006/EU